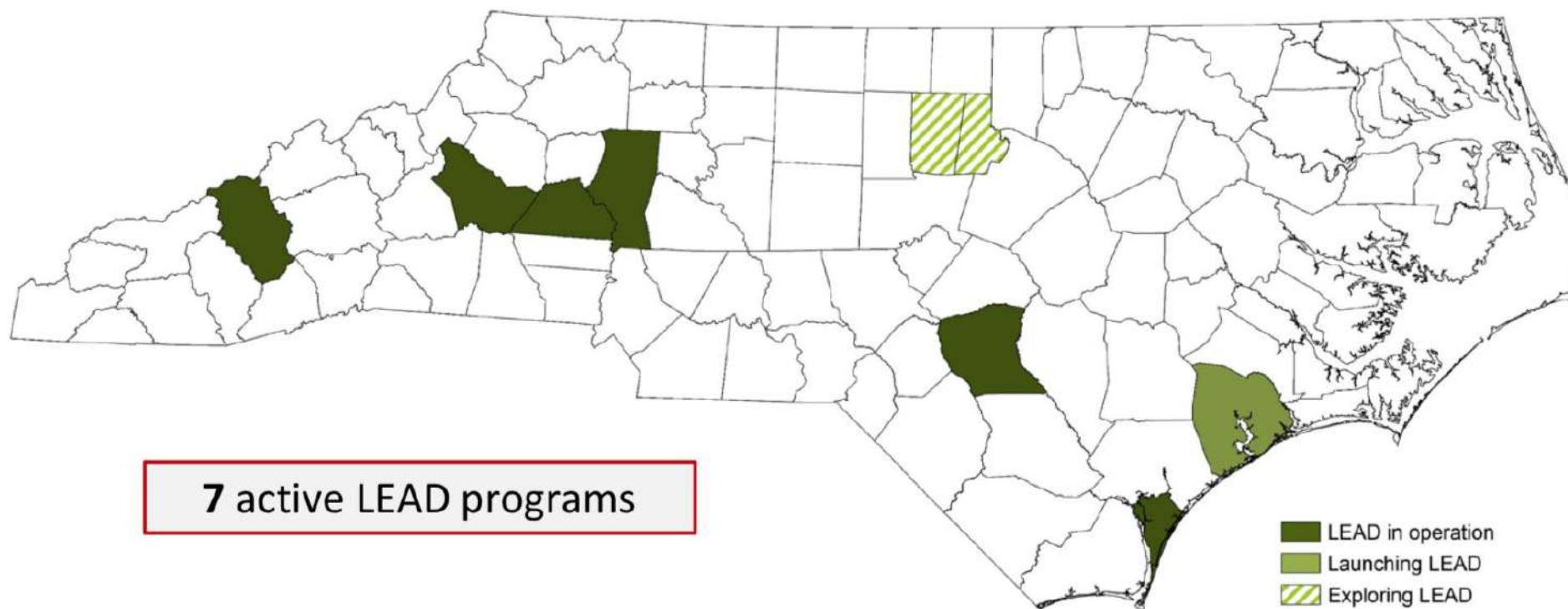


North Carolina Experience

Pre-Arrest Diversion &

Partnerships & Opportunities

Counties with Law Enforcement Assisted Diversion (LEAD)* as of August 31, 2019



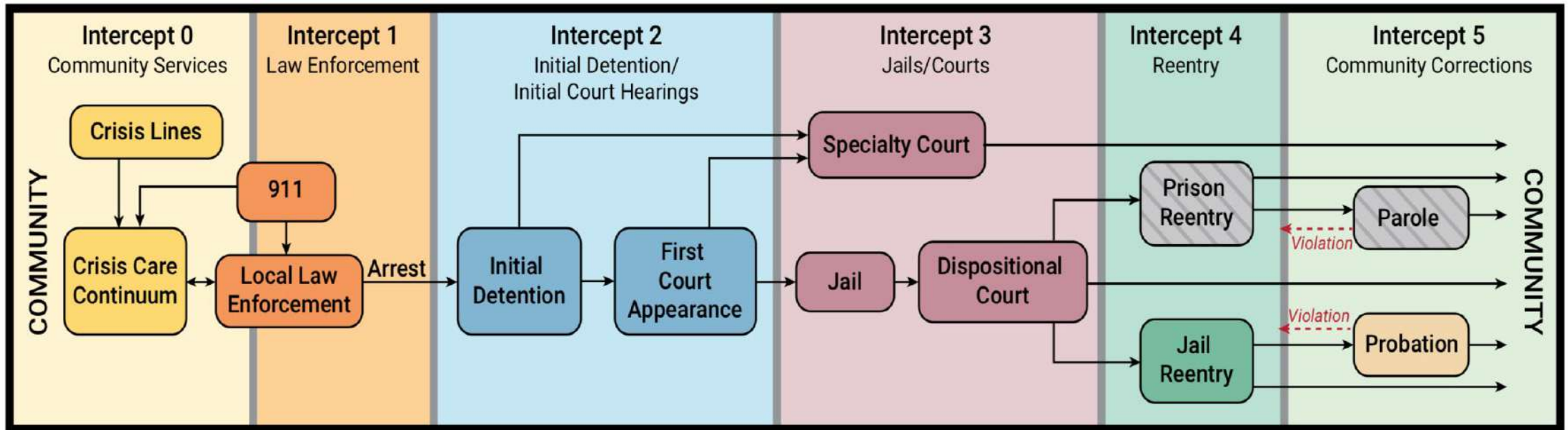
*LEAD is a pre-booking diversion program that allows Law Enforcement Officers to redirect low-level offenders engaged in drug or sex work activity to community-based programs and services, instead of jail and prosecution.

North Carolina Experience: Why Pre-Arrest?

- Addressing mental health issues within CJ system
- Recognized the value of partnerships (harm reduction, mobile crisis)
- Interest in reducing crime, primarily those associated with drug use
- Let's do something different!

Addressing behavioral health issues within CJ system

Success in jail diversion for those with serious and persistent mental health illness



Recognizing the value of partnerships

- Partnership with mobile crisis
- Officers carry naloxone
- Laws protect syringe exchange services
- Existence of Jail-Based services like MAT, overdose education, navigators
- Existence of other diversion programs

No Silo Zone

Reducing Crime

Reduction in criminal justice involvement pre and post LEAD engagement:

80% in LEAD participant criminal justice involvement

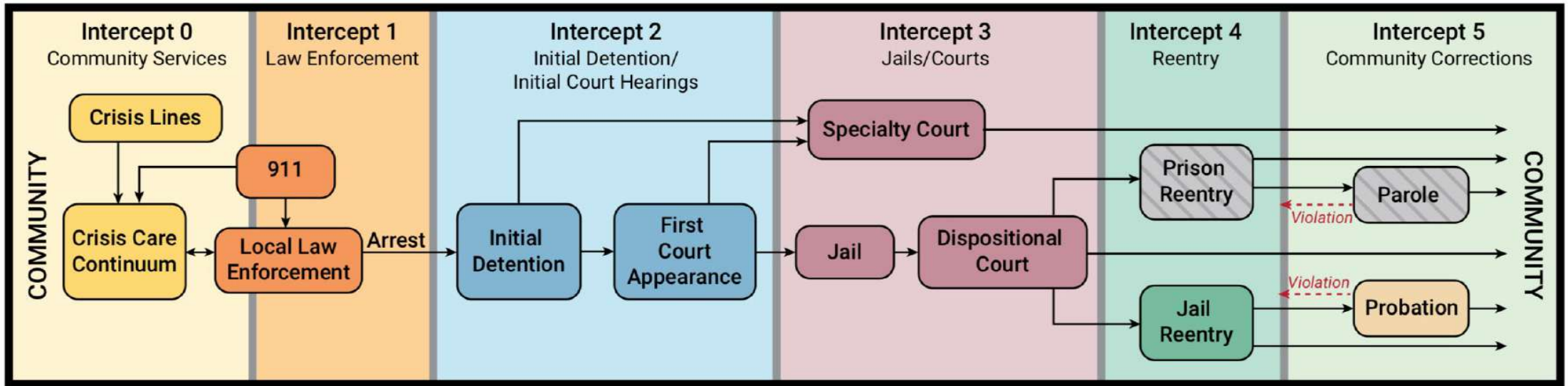
Majority are engaged in harm reduction services

Increased likelihood to engage in traditional treatment services such as MAT and out-patient

What Agencies are finding

- Reduced criminal justice activity
- Increased officer awareness/knowledge about services
- Improved health outcomes
- Reducing impact on judicial system
- Improved police/community relationships

What If They Aren't Ready for LEAD?



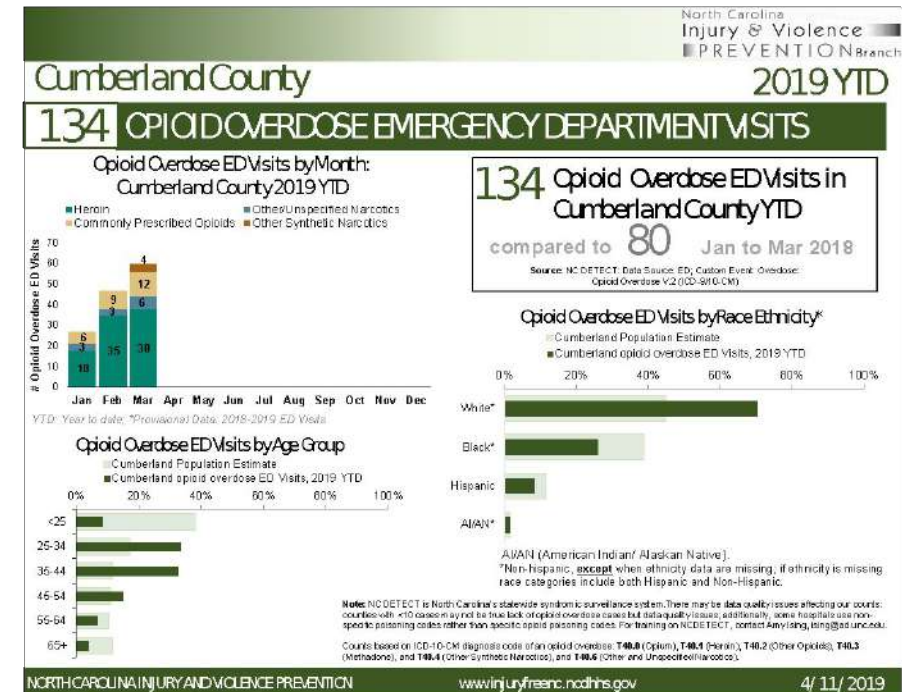
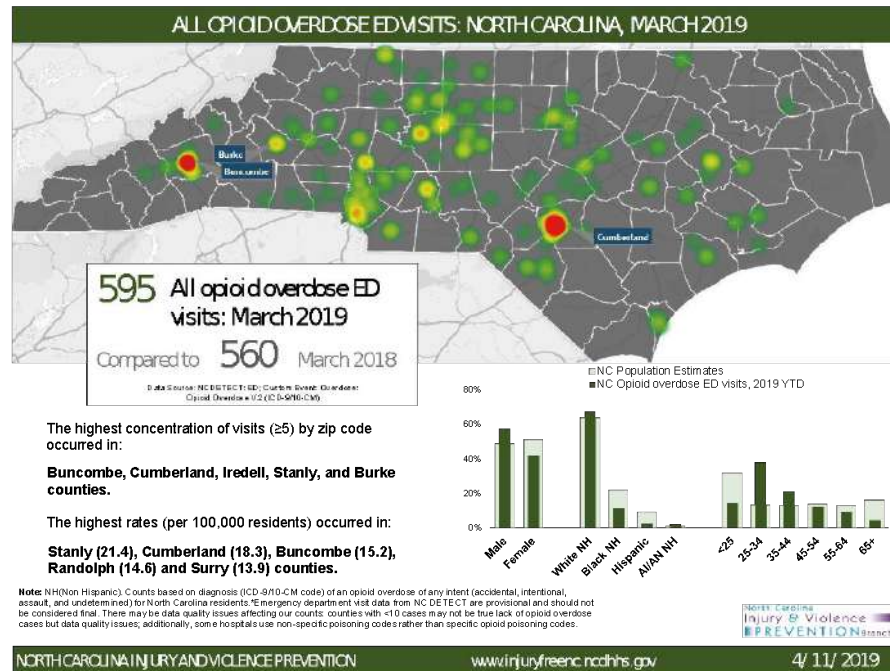
Find an intercept that presents an opportunity for partnership

What Can You Do? Let's Create Buy-In

- Understand where the level of readiness is within your community and within your law enforcement agencies
- Talk about harm reduction and alternatives to arrest again and again
- Ask: is anyone doing post-overdose?
- Find champions

What Can You Do? Let's Create Buy-In

- Find ways you can partner (ODMap info, injury & death data)
- Find the small wins



Melissia Larson
Law Enforcement Programs Manager
mlarson@nchrc.org

